

State of Wyoming Corner Record

(In compliance with the CORNER PERPETUATION AND FILING ACT, Wyoming Statutes 1-10-101 through 1-10-106 and the Rules and Regulations of the Board of Professional Engineers and Professional Land Surveyors)



RECORDED 3/31/2010 AT 1:03 PM REC# 541896 K# 2157 PG# 1470
DEBRA K. LATHROP, CLERK OF LARAMIE COUNTY, WY PAGE 1 OF 1

Reverse side of this form may be used if more space is needed.

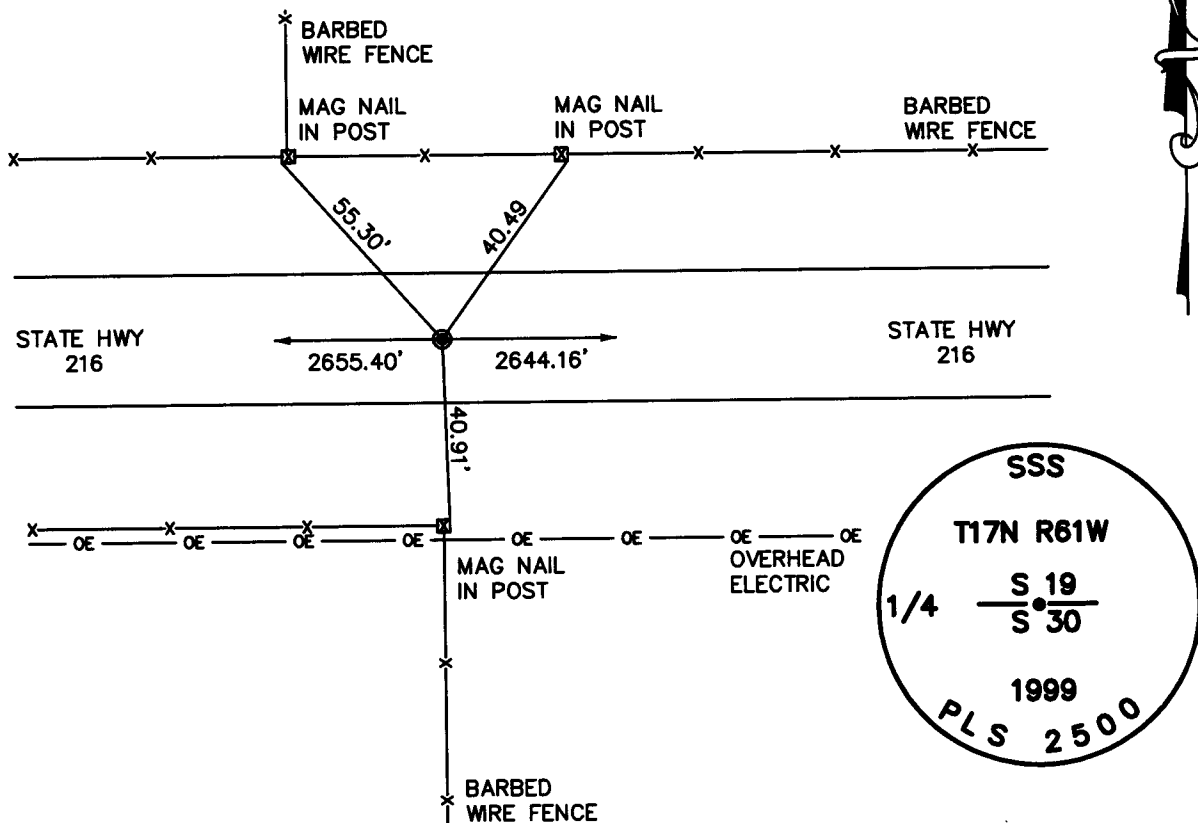
Record of original survey and citation of source of historical information (if corner is lost or obliterated). Description of corner monumentation evidence found and/or monument and accessories established to perpetuate the location of this corner. Sketch of relative location of monument, accessories, and reference points with course and distance to adjacent corner(s) (if determined in this survey). Method and rationale for reestablishment of lost or obliterated corner.

RECORD: LIMESTONE 18 X 14 X 4 SET 10" DEEP MARKED 1/4 ON NORTH SIDE FOR 1/4 SECTION CORNER.

MONUMENT FOUND: NOTHING FOUND

MONUMENT SET: SET A 5/8" X 24" REBAR WITH 2 1/2" ALUMINUM CAP DOWN 0.1' BELOW SURFACE OF STATE HWY 229 WITH CAP STAMPED AS SHOWN. MONUMENT WAS SET AT PROPORTIONATE DISTANCE E-W AND ON LINE WITH NW AND NE SECTION CORNERS.

REFERENCES: MONUMENT LIES 1' NORTH OF CL STATE HWY 216, ON LINE WITH FENCE SOUTH, 41' NORTH OF FENCE WEST, 38' EAST OF FENCE NORTH AND 39' SOUTH OF E-W FENCE.



Date of Field Work: 9/2/99

Office Reference: 99200

Monument Inscription

Cross Index Plat

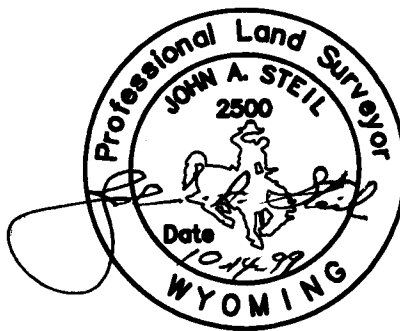
	1	2	3	4	5	6	7	8	9	10	11	12	13	14	15	16	17	18	19	20	21	22	23	24	25
A																									
B																									
C																									
D																									
E																									
F																									
G																									
H																									
I																									
J																									
K																									
L																									
M																									
N																									
O																									
P																									
Q																									
R																									
S																									
T																									
U																									
V																									
W																									
X																									
Y																									
Z																									

Firm/Agency, Address

STEIL SURVEYING SERVICES LLC
1102 WEST 19th STREET
CHEYENNE WY 82001
 Telephone Number: **(307) 634-7273**

This corner record was prepared by me or under my direction and supervision.

SEAL & SIGNATURE



Corner Name NORTH 1/4 Section 30, T 17 N, R 61 W, 6th P.M.

Cross-Index No.: R-3

County: LARAMIE Wyoming

SBRPEPLS/PLSW: March 1994; PLSW January 1998